



Polished Rod Accessories

We manufacture Hercules™ polished rod accessories to assist with maintenance and prolong the life of your polished rod. Throughout years of field proven experience, our products have been engineered to meet your quality expectations.

DO NOT ATTEMPT TO SURFACE OR THERMOSEAL COATED POLISHED ROD ACCESSORIES

Polish Rod Clamps

Figure Clamps



- Indention style
- Rugged, yet light and easy to handle
- Lower stress concentrations in polished rods
- Highest clamping capacity at any bolt torque
- Independent clamping segments on a common hinge
- Bolts have to be tightened only once
- Ends are precision machined perpendicular to axis of polished rod
- Streamlined design
- Small rotating diameter for use with rod rotators
- Zinc phosphate coating for better corrosion resistance
- Most economical design in the industry

Caution: All models can only be used on piston steel polish rods. Rod clamps are not capable of gripping the spray-metal section of "hard-faced" or "hard-coated" polish rods. Installation of rod clamps on the spray-metal portion of a hard-faced/hard-coated polish rod may also crack the hard-coating.

Rod Boss and Rod Boss Jr Clamps



- Friction style–Rod Boss
- Indention style–Rod Boss Jr.
- Zinc phosphate coating for better corrosion resistance

Polished Rod Clamps

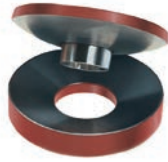
Specifications	Figure 1	Figure 2	Figure 3	Rod Boss	Rod Boss Jr.
Rated Load	13,000 lbs.	26,000 lbs.	40,000 lbs.	40,000 lbs.	25,000 lbs.
Maximum Test Load	32,000 lbs.	64,000 lbs.	76,000 lbs.	55,000 lbs.	35,000 lbs.
Polished Rod Size	1", 1-1/8", 1-1/4", 1-5/16", 1-1/2"	1", 1-1/8", 1-1/4", 1-5/16", 1-1/2"	1", 1-1/8", 1-1/4", 1-5/16", 1-1/2"	1-1/4", 1-1/2" (1-1/8" not available)	1-1/8", 1-1/4", 1-1/2"
Recommended Maximum Bolt Torque	250 ft-lbs.	250 ft-lbs.	250 ft-lbs.	550 ft-lbs.	250 ft-lbs.
Weight	3.75 lbs.	7.5 lbs.	11.25 lbs.	25 lbs.	10.5 lbs.
Height	2-1/2"	5"	7-1/2"	6-3/4"	4-1/8"
Rotating Diameter	5-3/4"	5-3/4"	5-3/4"	9"	9"
Body Material	Forged Steel	Forged Steel	Forged Steel	Forged Steel	Forged Steel
Nut Hex Size	1-1/4"	1-1/4"	1-1/4"	1-5/8"	1-5/8"

Caution: Do not exceed the bolt torque values specified above, otherwise galling of bolt threads may occur.

Polished Rod Accessories

Leveling Plate

- Minimizes polished rod breaks
- Compensates for carrier bar misalignment up to 2°
- Installed under rod rotator, or under polished rod clamp if rotators are not used
- Available for all polished rod sizes
- Ensures uniform engagement between polished rod clamp and carrier bar



Note: Mating convex and concave surfaces should be lubricated with grease prior to installation.

Polished Rod Support (PRS)

- Prevents crushing of packing by transferring rod load to stuffing box body
- Designed for use with Hercules SB, SBT and DPSB stuffing boxes equipped with standard LUG
- Constructed of lightweight, high-strength aluminum alloy
- Weight: 25 lbs.
- Maximum Load: 50,000 lbs.



Lubricator

- Provides convenient polished rod lubrication
- Easy installation—Use with any style of stuffing box
- Lubrication extends stuffing box packing life
- Uses 1 quart of ordinary motor oil
- Uses replaceable felt wicks (Specify rod size when ordering)
- Available for all polished rod sizes
- 5-½" height



Stuffing Box Clamp

- Assists operator in safely changing out primary packing in double packed stuffing box
- Holds top portion of stuffing box on the polished rod to allow access to the primary packing
- Can be used on polished rod sizes 1-¼" to 1-¾"



Hercules Bullet

- Used to assist in the installation of a polished rod through a stuffing box
- Reduces risk of damaging polished rod threads, stuffing box packing and flapper valve on PCSB stuffing boxes
- Includes cross-hole to assist removal from polished rod
- Available part numbers and sizes:
 - 150B– 1.5" x 1" Bullet
 - 875B– 1.5" x 7/8" Bullet
 - 100036– 1.25" x 7/8" Bullet

